

## MCU 4200

### Multimedia Conferencing Unit

The MCU 4200 Series Multimedia Conferencing Unit is a technologically advanced multipoint solution – designed to bring you the highest possible voice and video conferencing quality available on IP today – wrapped in a versatile, easy to use interface



The product is packed with power – utilizing the latest video technology to process an unprecedented number of simultaneous high bandwidth video streams.

#### Accessibility

The MCU 4200 is easy to use with features that are accessible to everyone. Use your video remote control or an Internet browser to:

- Create a conference
- Choose a conference to attend (audio participants use DTMF tones)
- Easily adjust the layout of your view to suit your requirements
- Select which sites you wish to view

The MCU 4200 Series supports any bandwidth for any connection – all you need to select is the start time and duration.

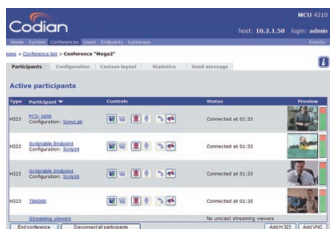
#### Streaming Video

Reach a broader audience – stream your conference over your intranet or the public Internet. The MCU 4200 Series operates with QuickTime™ to offer viewing at multiple speeds to ensure that everyone can comfortably watch the event. Attendees simply click on a URL to view the conference. Password protection is also supported.

#### High Bandwidth Conferences

Dedicated video processing allows each conference participant to have their own high bandwidth view of the conference without reducing the number of participants supported.

Each participant can send and receive up to 4 Mbit/s (or as low as 56 kbit/s). The MCU 4200 will automatically reduce the bandwidth and resolution for participants who have connected over slower links, while maintaining high quality for other users.



### Three High Capacity Versions

Model	Video participants Up to 2 Mbit/s	Additional audio participants	Maximum conferences	Video streaming Unicast / Multicast
MCU 4210	20	20	10	100 / unlimited
MCU 4220	40	40	20	200 / unlimited
MCU 4240	80	80	40	400 / unlimited

Using high bandwidth and Advanced (symmetric) Continuous Presence does not reduce the number of sites supported  
Upgrades to MCU 4220 and MCU 4240 available

#### Video Standards

H.261, H.263, H.263+, H.263++, H.264<sup>αβ</sup>

#### Video Resolution

QCIF, CIF, 4CIF<sup>γ</sup>, VGA<sup>γ</sup>

#### Frame Rates

Up to 30 frames per second in all conference modes.

#### Audio Standards

G.711, G.722, G.722.1<sup>α</sup>, G.728, G.729

#### Protocols

H.323 v4, H.239<sup>α</sup>, VNC, Telnet, RTP, HTTP, DHCP, SIP<sup>α</sup>

#### Bandwidth

Up to 2 Mbit/s in all conference modes including Advanced (symmetric) Continuous Presence

#### Transcoding and Transrating

Automatic audio and video transcoding and transrating on all video calls. Any bandwidth, any resolution, any video or audio codec can be used on any video call within the same conference.

#### Streaming Video

Embedded streaming server

H.261, H.263+, H.263++, MPEG4<sup>α</sup> video

Independent choice of bandwidth

Viewed using RealPlayer™ or QuickTime™

Embedded via web interface or stand alone via URL

Unicast and Multicast

#### MCU Features

H.323 dial in, or dial out from web server

Stand alone or using Gatekeeper

Configurable audio and video Auto Attendant

Advanced Continuous Presence as standard

Automatic selection of best layout

Individual layout selection using remote control or web pages

Conference-wide layout selection

36 custom layouts

Active speaker selection using remote control or voice activated

Floor assignment through web page

Far end camera control tunnelling using remote control or web

Text identification of sites

On-screen text messaging to individual or all sites

Embedded conference scheduling

Ad hoc conferences

Presentation mode: add slides from PC using VNC™

Preview of conference and individual camera on web pages

Uploadable bitmaps for audio participants

Video association for IP and traditional PBXs

Dual video using H.239<sup>α</sup>

#### Embedded Web Server

Complete configuration, control and monitoring of the system and conferences

#### Audio Features

Audio mixing at wide band

Auto Attendant voice prompts

Automatic Gain Control, adjustable gain, power indication, individual audio mute using web pages

#### System Management

Management via embedded web server

RS-232 for local control and diagnostics

Telnet and Syslog for diagnostics

Configurable event logs and full H.323 decoding

Backup to network or Compact Flash

Secure upgrades through Ethernet or Compact Flash

CDR records<sup>α</sup>, SNMP<sup>α</sup>, XML API<sup>α</sup>

#### Quality of Service

DSCP, IP Precedence, TOS

#### Security Features

Administrator, User and Guest passwords

Password protected conferences

DTMF passwords

Secure non PC hardware and operating system

Hardware AES encryption, 128 bit key<sup>α</sup>

Secure firewall traversal using Dual Ethernet<sup>α</sup>

#### Interfaces

2 x RJ45 Ethernet, 10/100/1000 Mbit/s full/half duplex,

manual or auto sensing

RJ45 serial port

Compact Flash socket

39 status LEDs

#### Environmental Data

Operating temperature 0°C to 35°C ambient

Relative humidity below 90%

#### Physical Dimensions

Height 1.73", 44 mm (1U), Width 17.2", 437 mm

Depth 12.3", 312 mm, Weight 9 lbs, 4kg

19" rack mountable (kit supplied) or stand-alone

Power 100-240 VAC, 50/60Hz

110W max power consumption

#### Approvals and Compliance

European safety: EN 60950:2000

USA, Canada safety: UL 60950 Third Edition,

CAN/CSA-C22.2 No. 60950-00

EMC: EN55022 class B, EN61000-6-2,

EN61000-4-2,-3,-4,-5,-6,-11, FCC Part 15 class A

CE marked



<sup>α</sup> Not available in initial release, requires software update

<sup>β</sup> H.264 upgrade is software only and does not reduce the number of sites supported

<sup>γ</sup> 4CIF, VGA reduce the number of sites supported

© Copyright 2004 Codian Ltd. All trademarks are the property of their respective owners

#### Codian Inc

1570 The Alameda #216  
San Jose CA 95126  
USA  
Tel: (408) 287 6628  
Fax: (408) 287 6630

#### Codian Ltd

1 Elder Way  
Langley Business Park  
Slough SL3 6EP  
United Kingdom  
Tel: +44 (0)1753 548 333  
Fax: +44 (0)1753 548 303